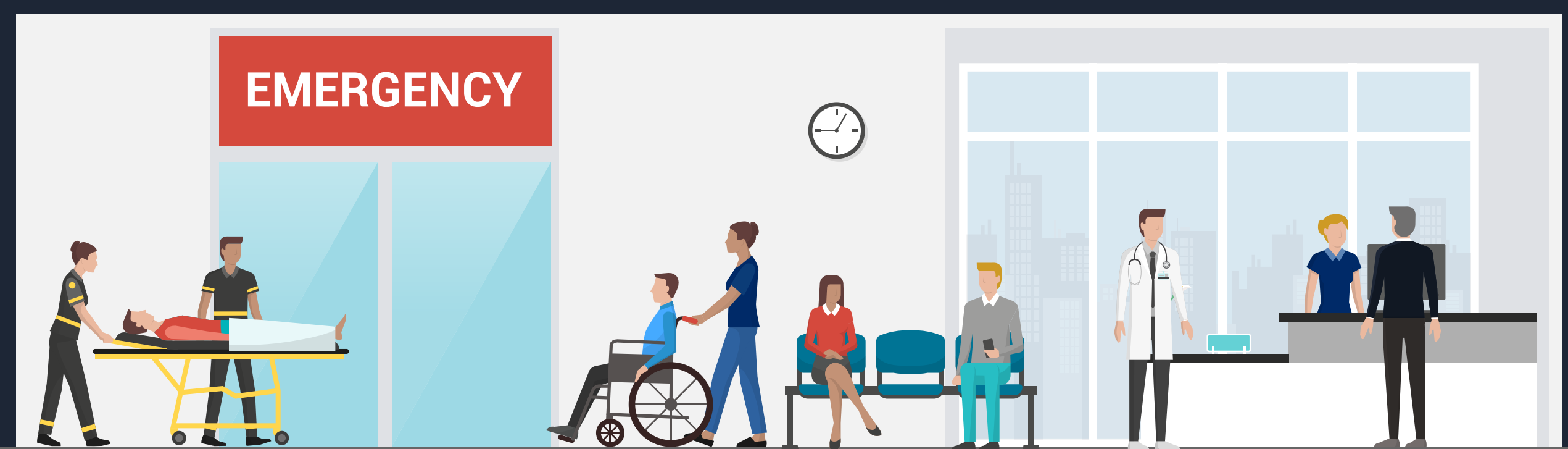


RELIEVE EMERGENCY DEPARTMENT CROWDING

BY INCREASING THROUGHPUT



WHY SO CROWDED?

EMERGENCY DEPARTMENT VISITS BY THE NUMBERS



136.9 million visits per year

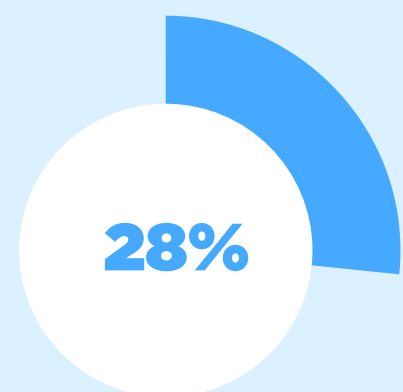


12.3 million patients admitted to the hospital



1.5 million patients admitted to critical care unit

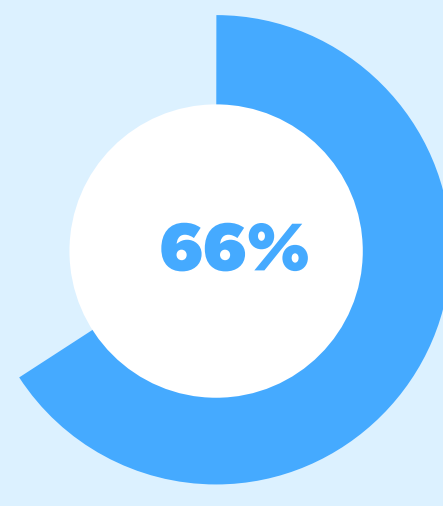
ED VISITS FOR ACUTE CARE



ED visits account for **28%** of all acute care visits

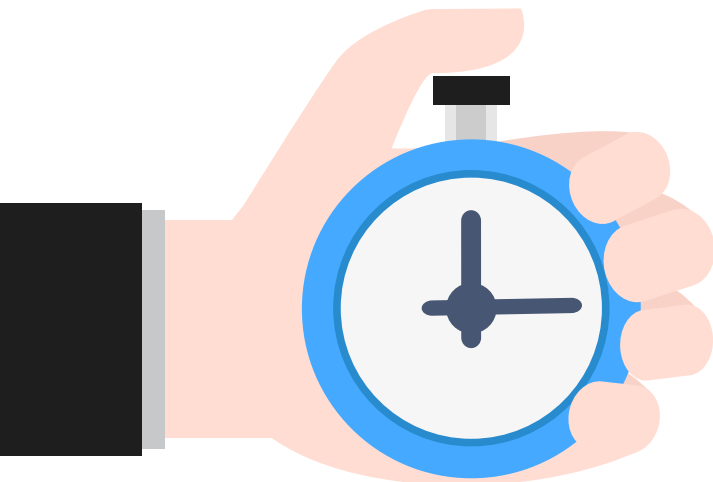


50% of Medicaid and CHIP recipients get acute care from the ED

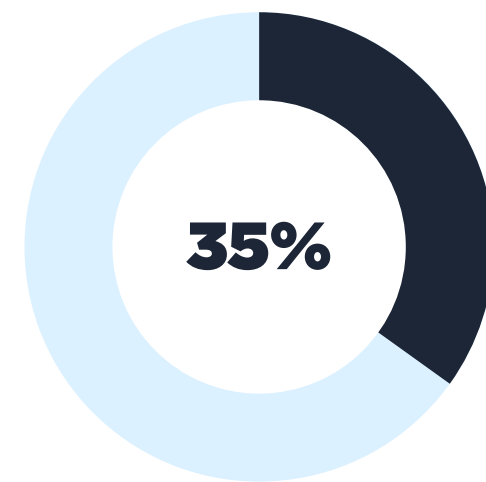


66% of the uninsured get acute care from the ED

THE CLOCK IS TICKING



Only **35%** of patients are seen in less than **15 minutes**



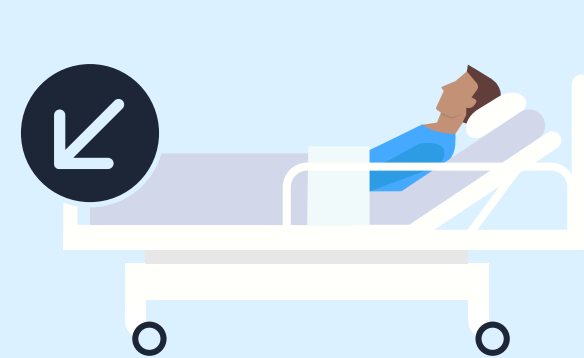
WHY BOOST ED THROUGHPUT?



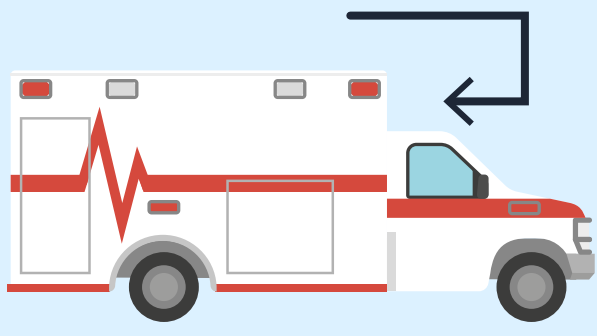
Deliver timely patient care



Increase patient safety



Reduce hospital admissions



Decrease ambulance diversion



Minimize ED boarding



Improve the patient experience



Increase cost savings

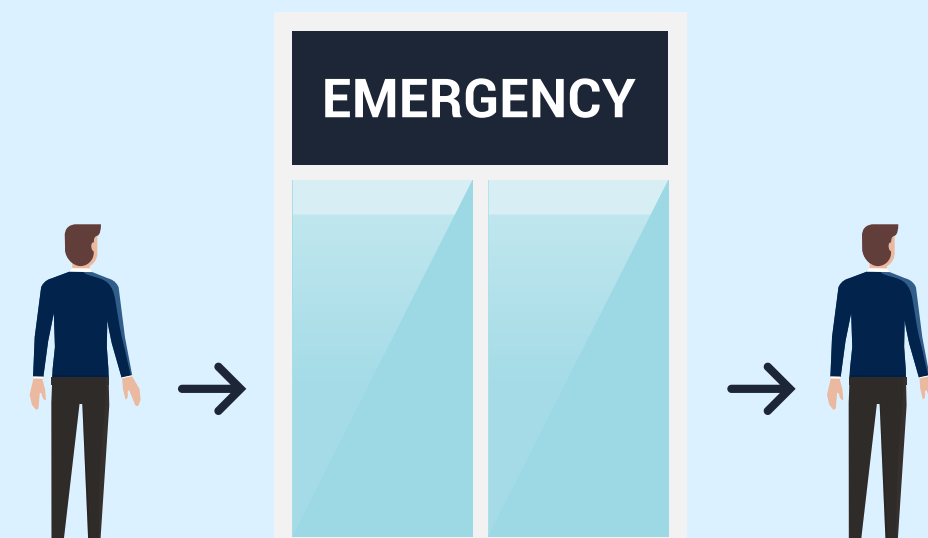


Improve staff morale

FOUR METRICS FOR MEASURING THROUGHPUT



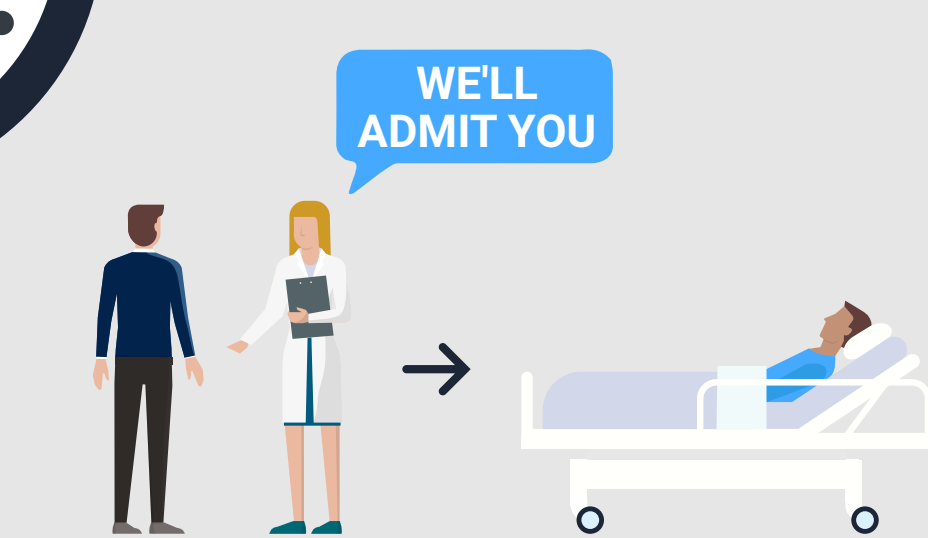
Door-to-provider time



Arrival to departure time



Discharge time to patient departure time



Admit decision time to ED departure time

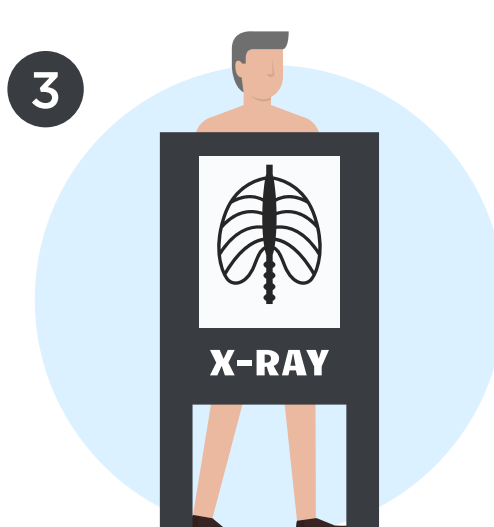
6 WAYS TO IMPROVE THROUGHPUT IN YOUR EMERGENCY DEPARTMENT



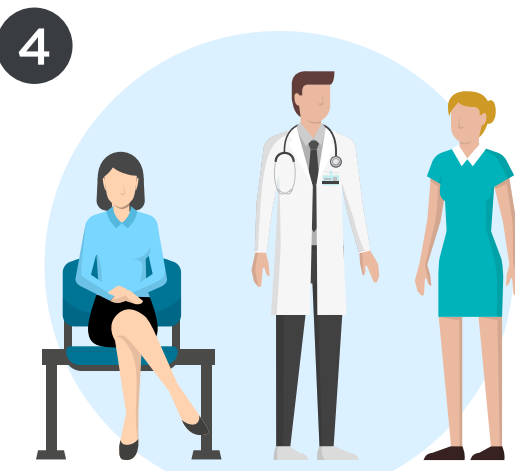
1 Assign a physician to triage



2 Keep low-acuity patients upright



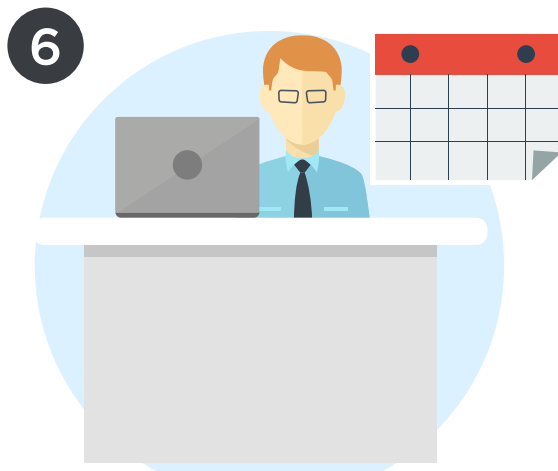
3 Expedite laboratory testing and imaging orders



4 Utilize advanced practice providers



5 Assign patient flow coordinators



6 Streamline on-call physician scheduling

SOURCES: Centers for Disease Control and Prevention: <https://www.cdc.gov/nchs/fastats/emergency-department.htm>
Centers for Medicare & Medicaid Services: <https://www.cms.gov/research-statistics-data-and-systems/research/cahps/ed.html>